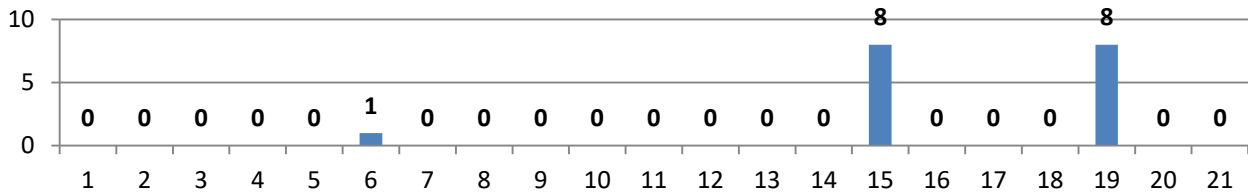


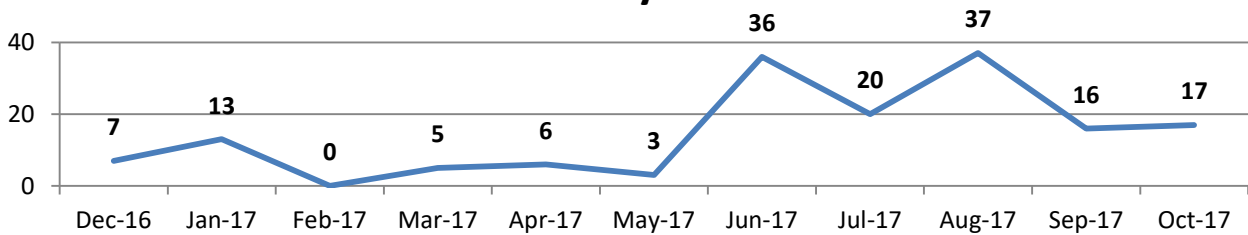
# Use It or Lose It

NYCC Service Stats October 2017

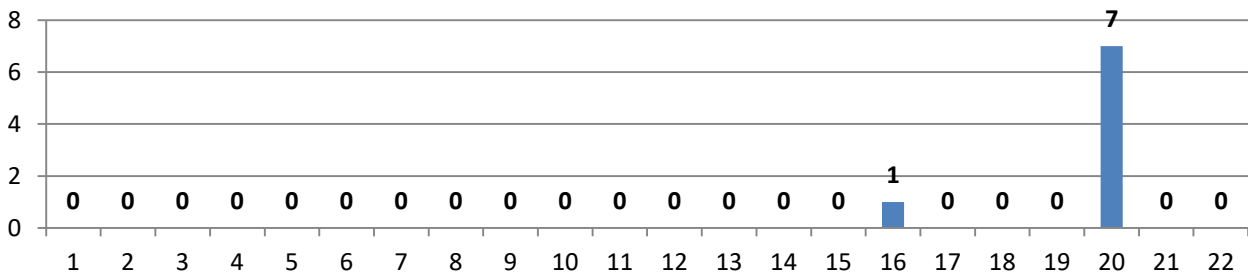
**Pharmacy by Pharmacy Rethink Drink Scratch Card Alcohol IBA Stage 1**



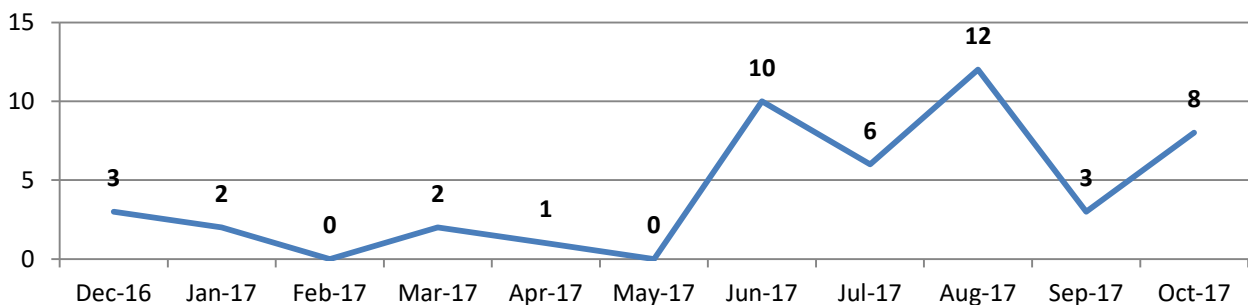
**Rethink Drink Scratch Card Alcohol IBA Stage 1 Month by Month**



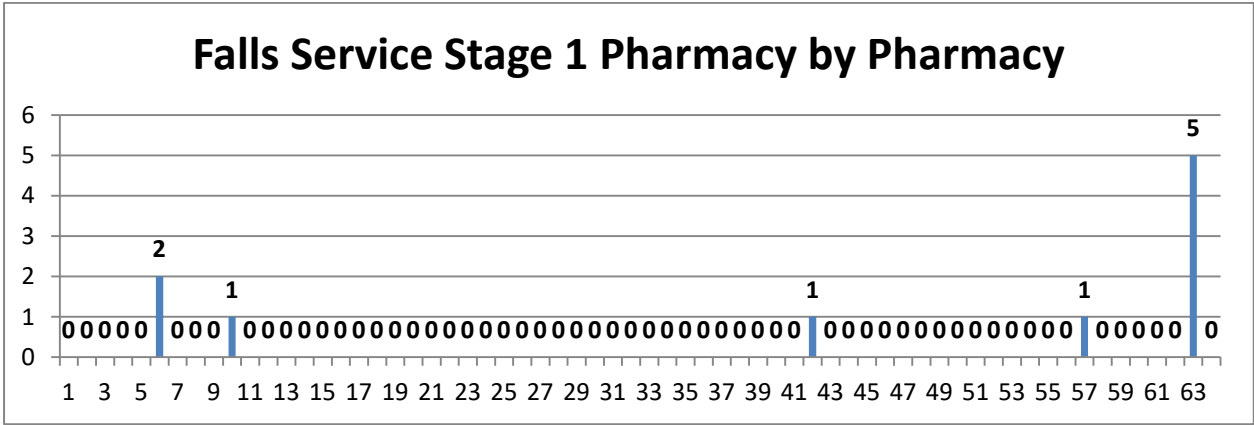
**Pharmacy by Pharmacy Alcohol IBA Stage 2**



**Alcohol IBA Stage 2 Month by Month**

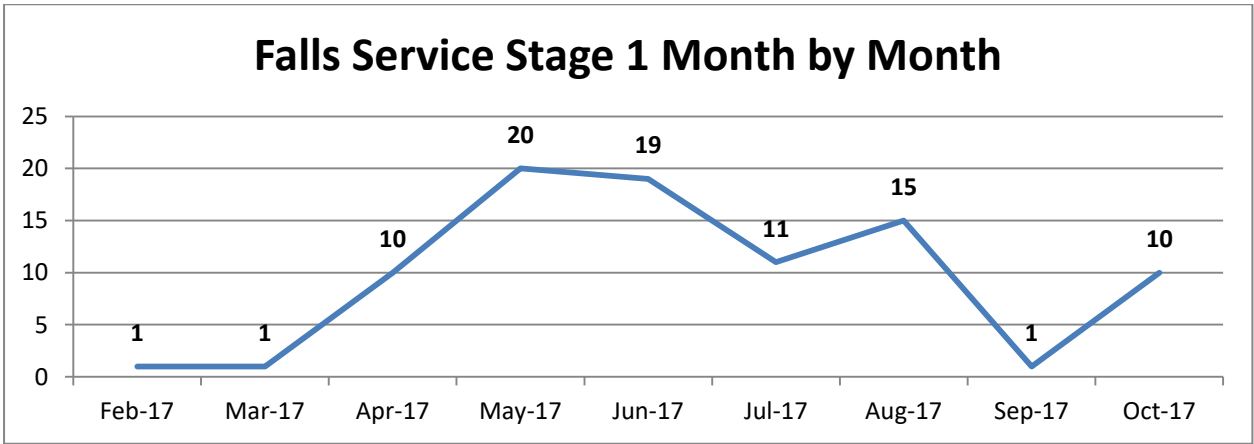


### Falls Service Stage 1 Pharmacy by Pharmacy

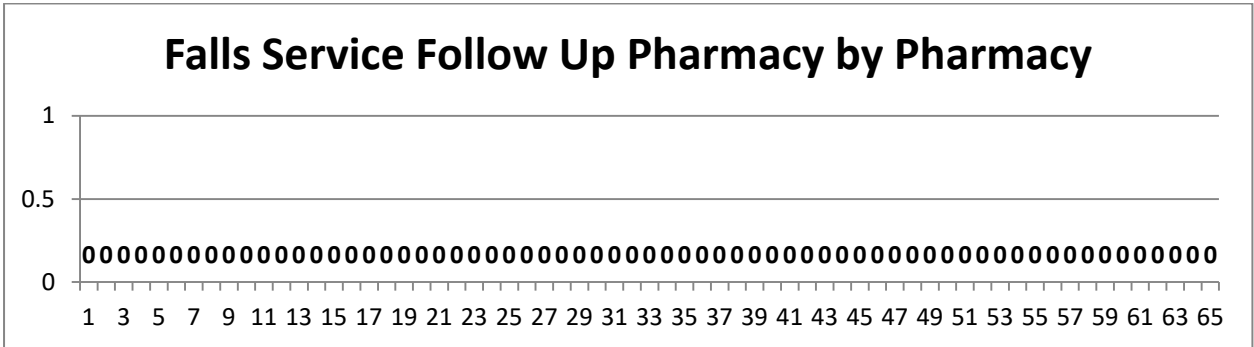


Please note NYCC's Target for the Falls Service is 2 per pharmacy a week

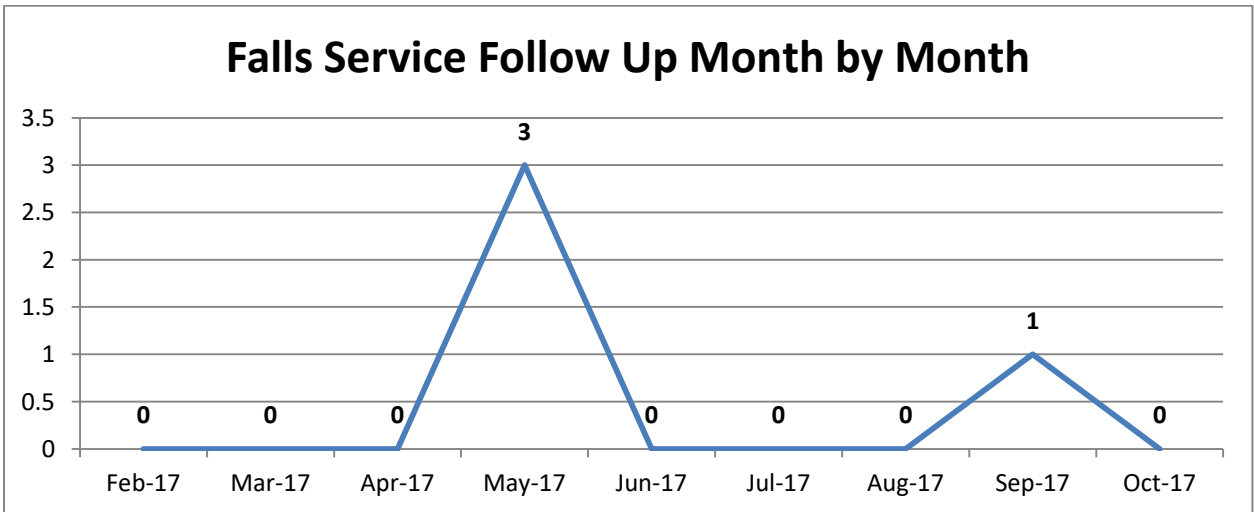
### Falls Service Stage 1 Month by Month



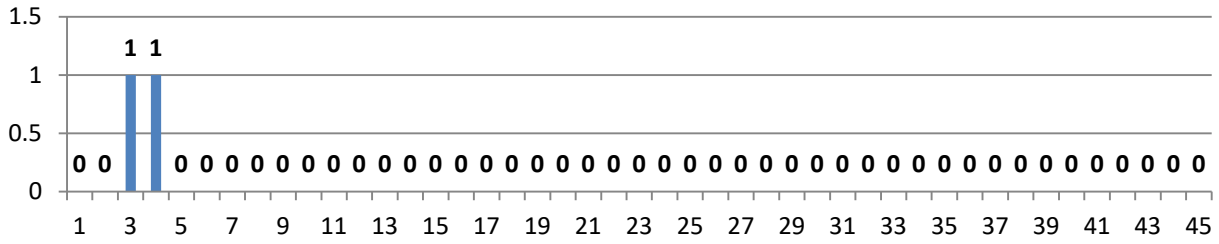
### Falls Service Follow Up Pharmacy by Pharmacy



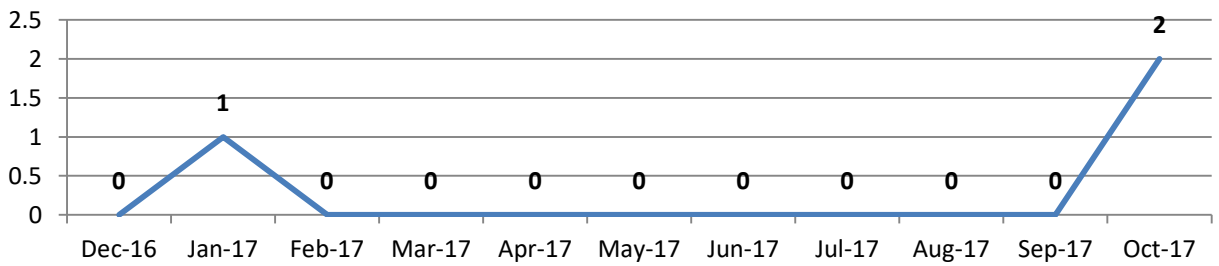
### Falls Service Follow Up Month by Month



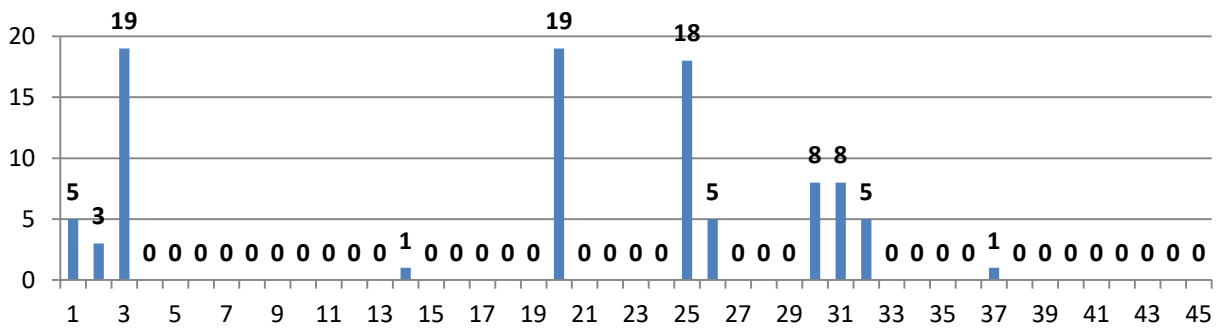
### Smoking Cessation Referrals to S4H Pharmacy by Pharmacy



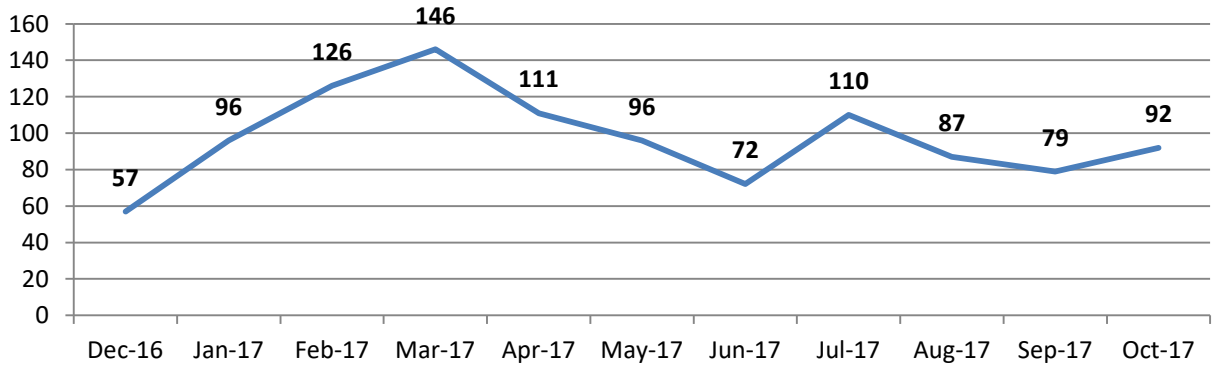
### Smoking Cessation Referrals To S4H Month by Month



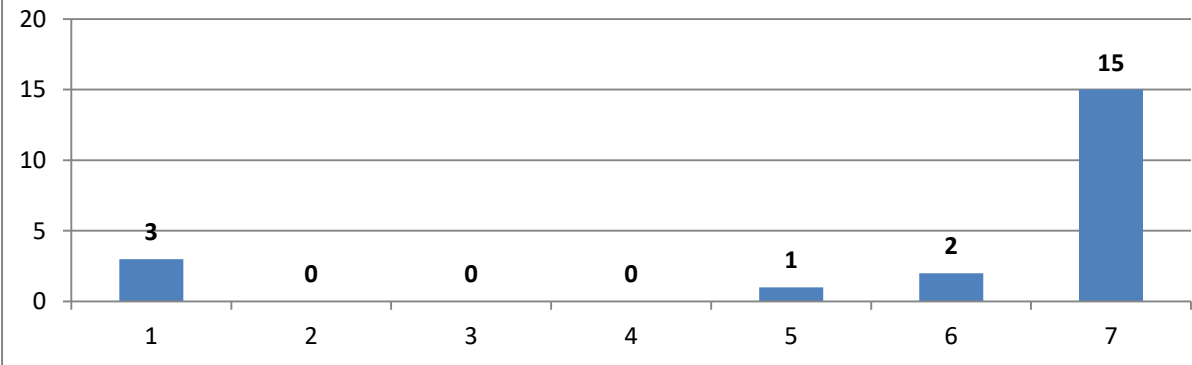
### Nicotine Replacement Supply Pharmacy by Pharmacy



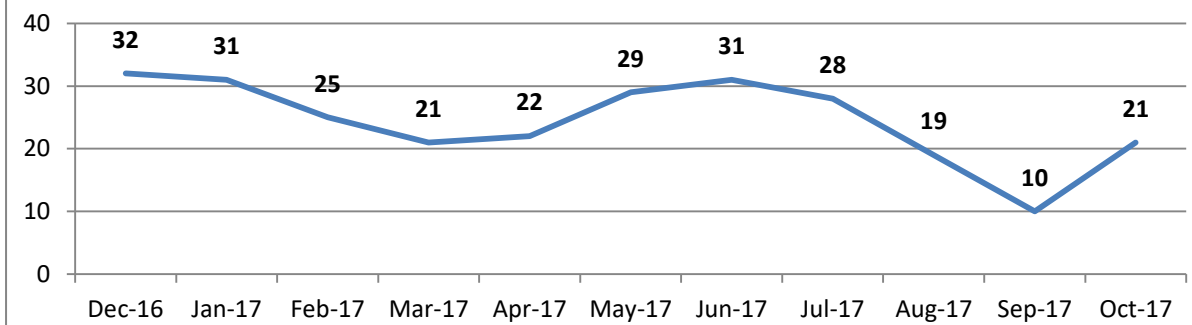
### Nicotine Replacement Supply Month by Month



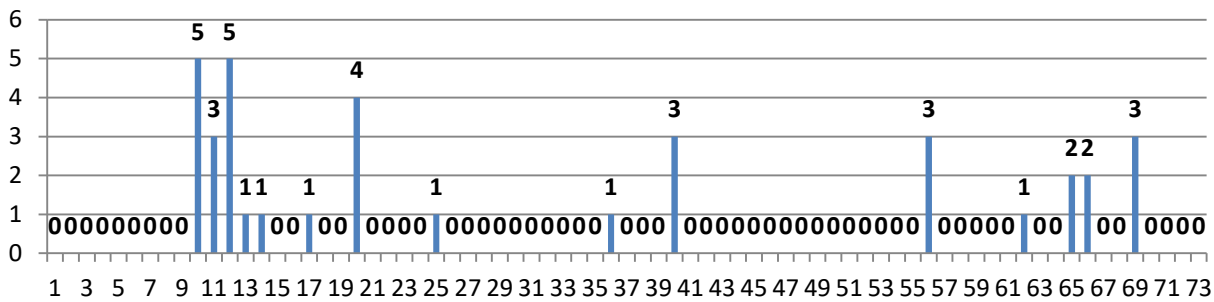
### Varenicline Supply Pharmacy by Pharmacy



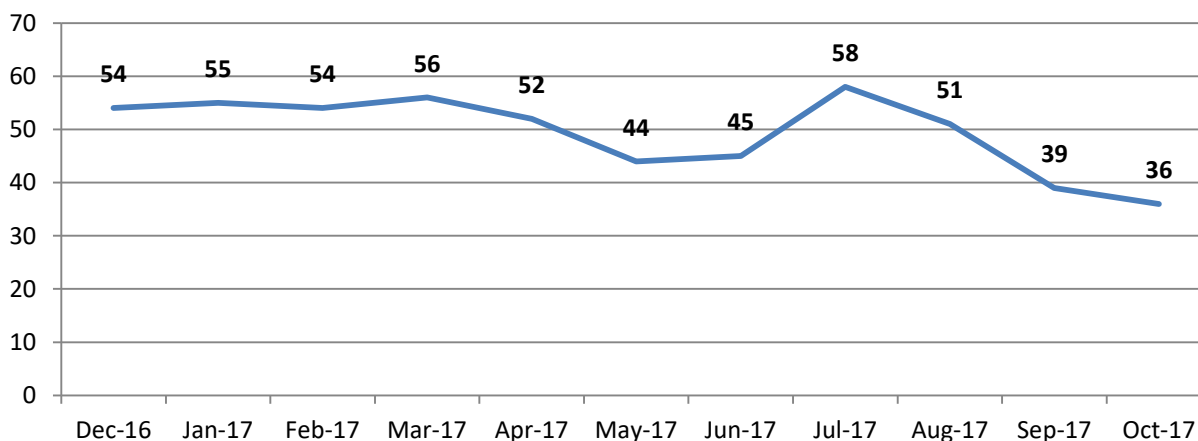
### Varenicline Supply Month by Month



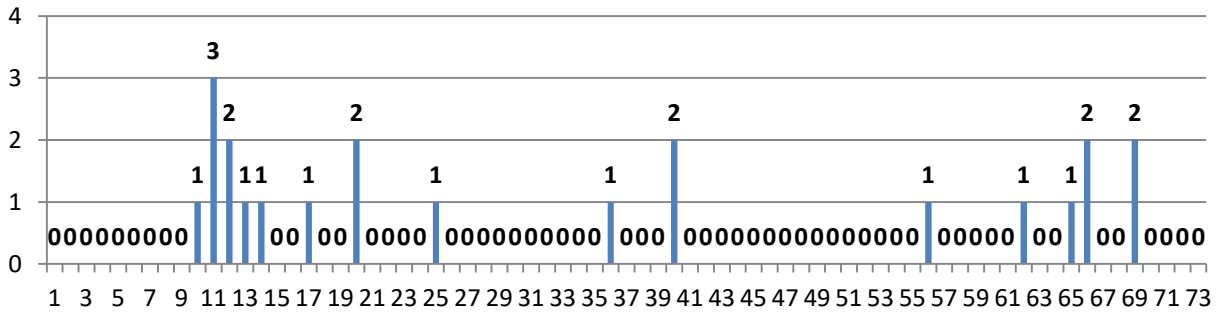
### EHC Stage 1 Registration Pharmacy by Pharmacy



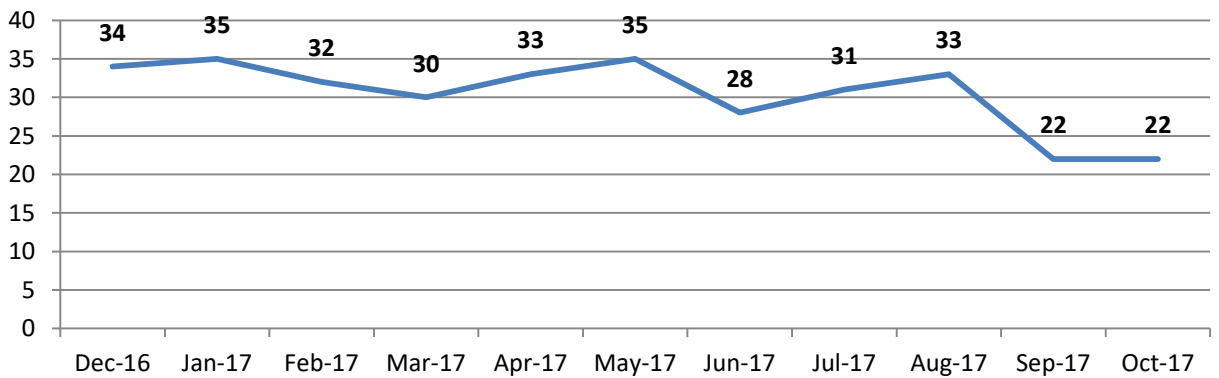
### EHC Stage 1 Registration Month by Month



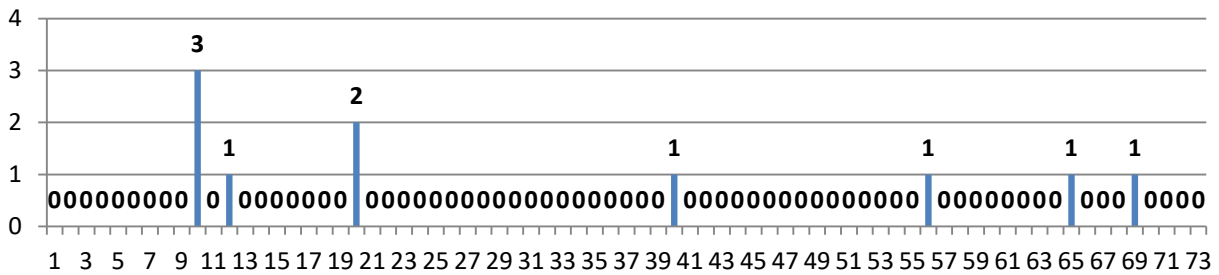
### EHC Stage 2 LNG 1500mg Pharmacy by Pharmacy



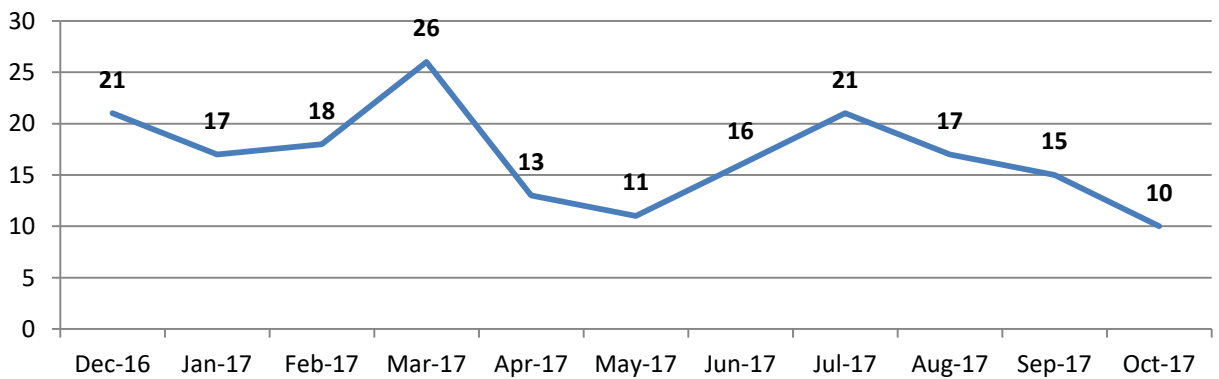
### EHC Stage 2 LNG 1500mg Month by Month



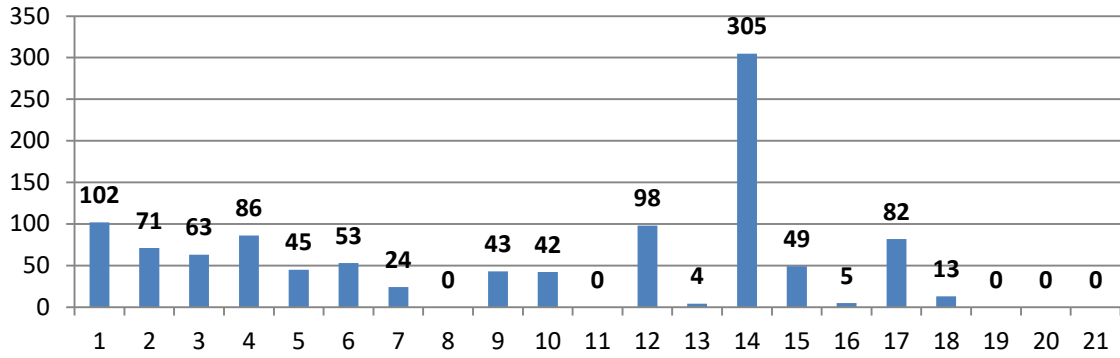
### EGC Stage 2 UPA 30mg Pharmacy by Pharmacy



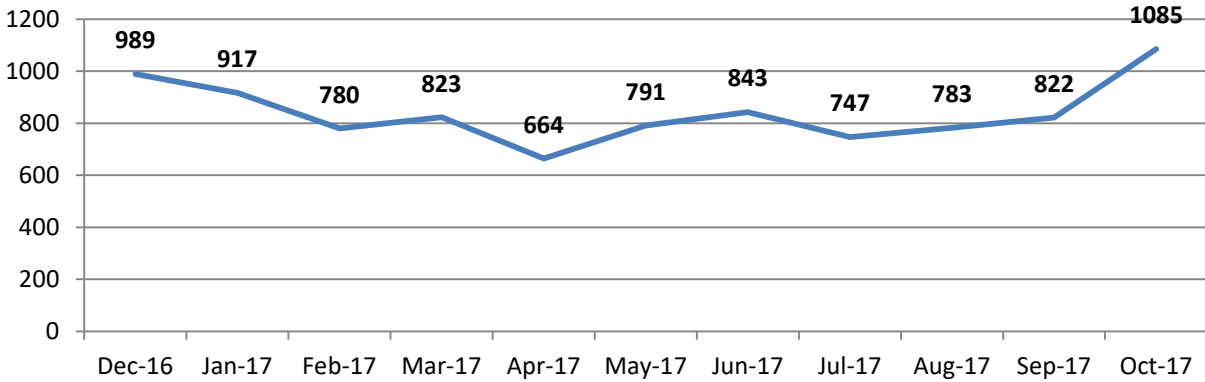
### EGC Stage 2 UPA 30mg Month by Month



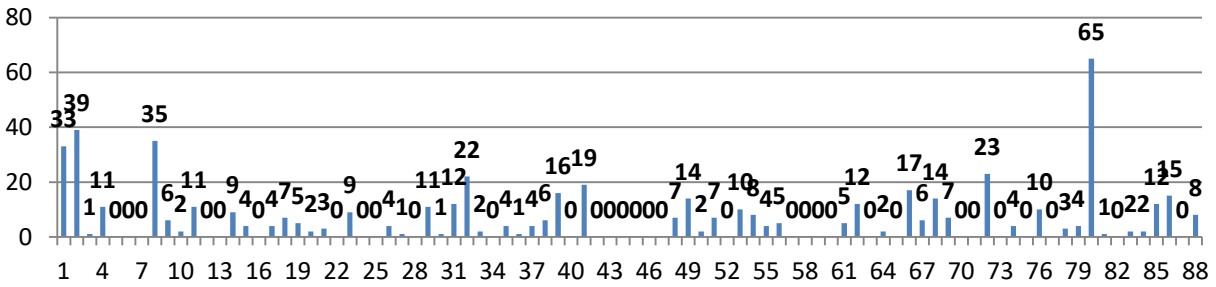
### Needle Exchange Pharmacy by Pharmacy



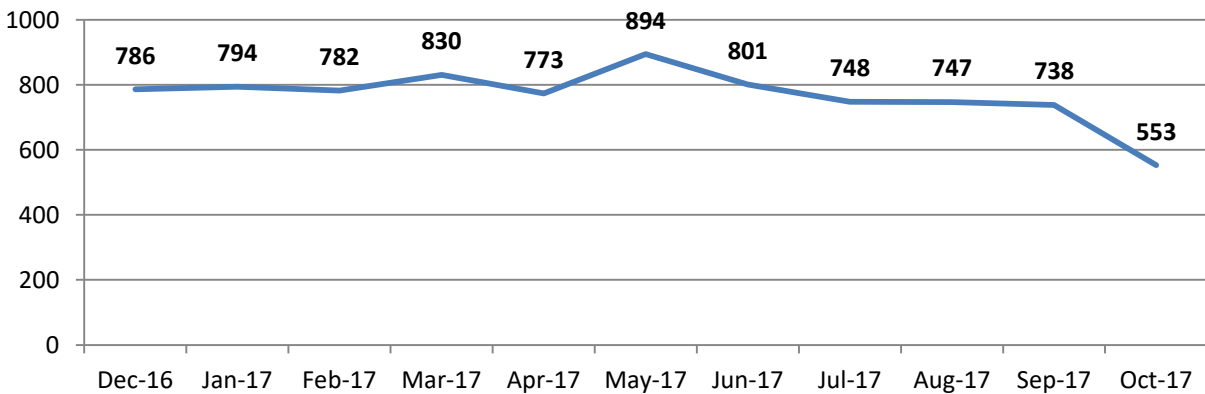
### Needle Exchange Month by Month



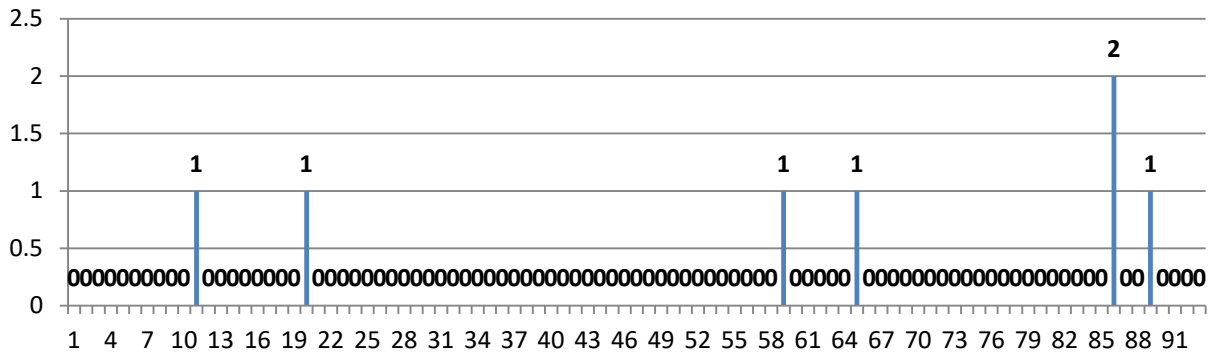
### Supervised Consumption Pharmacy by Pharmacy



### Supervised Consumption Month by Month



## Supervised Consumption Out Of Area Pharmacy by Pharmacy



## Supervised Consumption Out Of Area Month by Month

